

GW COSMETICS®

RefectoCil®

*Brow + Lash Bar*

*#theworldinyoureyes*





GW COSMETICS®

PERFECT BROWS AND LASHES BY THE WORLD MARKET LEADER REFECTOCIL®



## Introducing RefectoCil® Brow+Lash Bars

Where expertise meets trust. With over 90 years of experience in eyelash and eyebrow products, we offer a complete treatment package, including shaping, coloring, and care. Our focus is on delivering exceptional customer service that goes beyond technical skills. By prioritizing the eye area, we create a space where customers can trust our skilled „Browistas.“ Our RefectoCil® Brow+Lash Bars have generated a real hype, achieving cult status with customers and the press.

Become our valued partner and unlock the path to success at RefectoCil® Brow+Lash Bars, where unparalleled service awaits you.

**RefectoCil®**  
*Brow+Lash Bar*

by the world market  
leading brand  
RefectoCil®

  
**GW COSMETICS®**  
SINCE 1930

## BRAND SHOPS

STEFFL DEPARTMENT STORE VIENNA



GALERIES LAFAYETTE BERLIN



HAIRDRESSER INTERCOIFFURE  
WORLD PRESIDENT PETER PFISTER AUSTRIA





# RefectoCil®

## Brow + Lash Bar

### DIMENSIONS

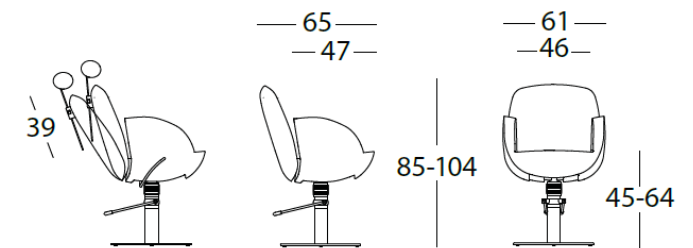
Width optional.  
One or more  
working chairs

Image size,  
adapted  
individually

Height  
optional

Mirror, round  
diameter 85 cm

Table, black,  
reversible glass shelf  
W 100, D 35, H 85



Chair measurements in cm

Chair, various colors

Floor,  
printed

110cm per  
working chair min.





## PARTNER PACKAGE

Working chair, including

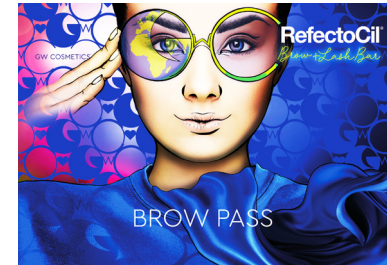
- Wall foil with trademarked GiWy artwork, customized to available space
- Floor foil with RefectoCil® Brow+Lash Bar signature design
- Exclusive armchair in appealing colors, adjustable
- Round mirror Ø 85cm
- Table, black with reversible glass tray, 110cm
- RefectoCil® designed outfits for team and customers: 5 capes, sweaters, and T-shirts
- Marketing materials include brow passes, gift vouchers, design bags, and POS displays to boost additional product sales
- Shop finder on RefectoCil® Brow+Lash Bar homepage

Shipping and installation excluded

## PRODUCTS

Exclusive use of RefectoCil® products

Participation in two annual trainings provided by RefectoCil® Academy is obligatory and incurs a fee





# RefectoCil®

## Brow + Lash Bar

Bring the service of brow and lash styling in your new **Brow and Lash Corner** to the next level with products of the world market leading brand **RefectoCil®**



Endless colouring possibilities with our mix and match system

Hybrid colouring system for a beautiful make up effect

Create additional sales with cross- and upselling



Exclusive for  
Marionnaud

Line and Shine Range

Brow & Lash Booster

Dare to Care Range  
with BeautyLash® rebranded products





GW COSMETICS®

SINCE 1930

**RefectoCil®**

MADE IN AUSTRIA



GW Cosmetics GmbH | Achauerstraße 49a | A-2333 Leopoldsdorf | AUSTRIA

[browandlash-bar.com](http://browandlash-bar.com)